

Togitsu Town, Togitsu River Flood Hazard map for households as of March Reiwa 3

Use this hazard map to protect yourself from flooding.

This Flood Hazard Map has been produced to help you prepare for flooding in your area by providing information on the risk of flooding and evacuation.

Normal/Everyday preparations you can make

Please check the hazard map in advance to see the extent of possible flooding and other damage in your area.



Guidelines regarding evacuation

The appropriate evacuation action depends on the environment and other factors, so consider your evacuation action in relation to flooding.

The decision to evacuate (actions to be taken)

Please refer to the warning levels announced by the Japan Meteorological Agency and the evacuation information issued by Togitsu Town, and take the appropriate actions.

Evacuation information communication methods

It is important to get weather and evacuation information as quickly as possible. Information on evacuation decisions will be communicated to the public in a variety of ways. It is also important to keep up to date with the latest information on television and the internet to ensure that you do not miss your chance to escape.

Normal/Everyday preparations you can make

Each household should have a 3-day supply of drinking water and food for emergencies.

Emergency Supply Kit

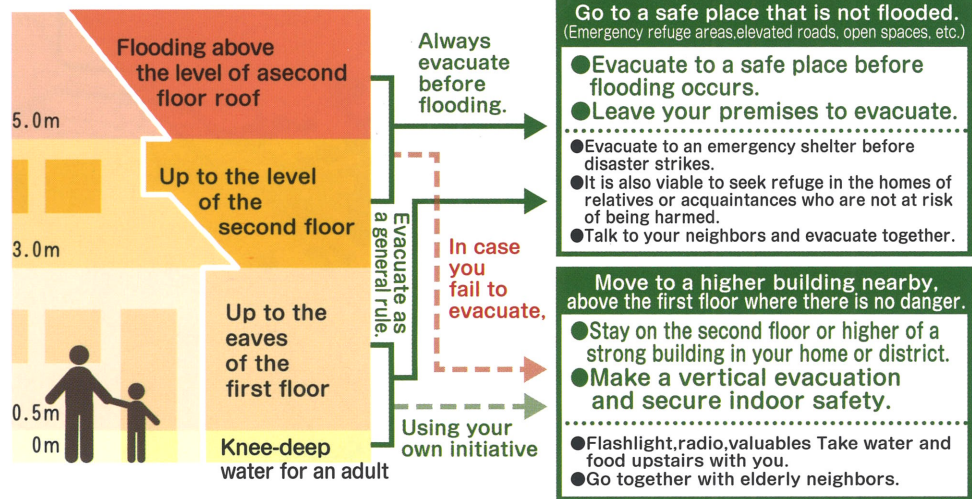
Prepare in advance what you will take with you in an emergency. Decide what to take with you according to your family's circumstances. Check your belongings regularly to make sure they are in good condition.

<input type="checkbox"/> Valuables	Cash, bank book, seal, etc.
<input type="checkbox"/> Emergency food	Drinking Water, Items such as kanpan (dried bread crackers), canned food, cookies, etc. Food that can be eaten without cooking
<input type="checkbox"/> First aid supplies	Equipped with disinfectant, digestive medicine, absorbent cotton, gauze, medication, thermometers, masks etc.
<input type="checkbox"/> Clothing	Items such as rain gear, underwear, jackets, towels, clothing, including jackets and socks etc.
<input type="checkbox"/> Equipment	Flashlight, portable radio, mobile phone, rope, soap, can opener, matches, lighter, Sneakers etc.



Guidelines regarding the estimation of the depth of flood water and evacuation

The appropriate evacuation action will depend on the location of your home and your surroundings. In the event of a flood, check the hazard map in advance to see if your home needs to be evacuated or if moving to an upper floor will reduce the risk to your life.



○ Even when rivers do not flood, low lying areas can be flooded above and below floor level.

○ In reality, the depth of flooding may be different to what is expected, and flooding may occur in areas other than those shown on the map.

Vacating a premises and shelter

Evacuate as soon as possible to a designated evacuation center or to a relative or friend's house outside the flood zone

- if the flood depth is expected to be deep.

Making a vertical evacuation and securing indoor safety.

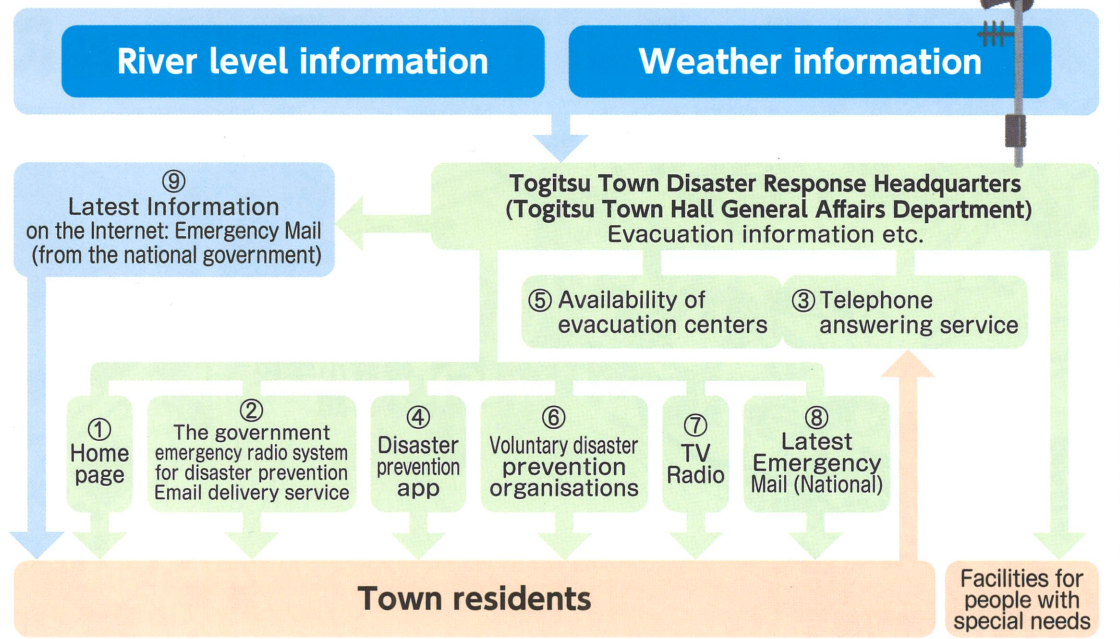
Move to a safer room on a higher floor in the building you are in at the time

- (1) if flooding has already started and it is not safe to evacuate outdoors,
- (2) or if it is difficult to see the danger spots on the evacuation route at night or due to sudden rainfall,
- (3) or if the depth of the flood water is expected to be shallow.

※ In the event of flooding from rivers or roadside ditches, it is rather dangerous to move through flooded areas.

※ As flooding often dissipates in a short period of time, even if you are isolated, basically - don't move.

This is how evacuation information will be communicated:



1 Homepage

<https://www.town.togitsu.nagasaki.jp/>

When emergency information is sent out, it will be posted at the top of the home page.



2 The government emergency radio system for disaster prevention>Email delivery service

togitsu@entry.mail-dpt.jp

The e-mail distribution service is a service to disseminate the contents of the radio broadcast from the disaster prevention administration simultaneously to registered people's mobile phones and PCs. You can register by sending a blank email, by using the QR code or by visiting the website.



3 Telephone answering service ☎0800-200-3208

This is a service that allows you to listen again to the content of the disaster prevention radio broadcast.



4 Disaster prevention app

This service provides evacuation information and rainfall forecasts provided by Yahoo! Japan.

for iPhone (App Store) for Android (Google Play)



< iOS App >
<https://apps.apple.com/jp/app/id481914139>

< Android App >
<http://play.google.com/store/apps/details?id=jp.co.yahoo.android.emg>



5 Availability of evacuation centers

<https://vacan.com/area/togitsu-cho-evacuation/evacuation-center/13>

You can check the status of evacuation centers and congestion on your smartphone or computer at any time.

You can avoid the concentration of people in some shelters to enable dispersed evacuation.



6 Network of voluntary disaster prevention organizations



7 TV·Radio

TV data broadcasts are constantly updated with weather, disaster prevention and water level information (NHK only).



8 Latest Emergency Mail (National)

This service is available to all four mobile phone providers in use in the town (no registration required).

9 Latest Information on the Internet: Emergency Mail (from the national government)

Analytical rainfall data
Rainfall information
River level information
Dam information
Flood hazard information
Landslide hazard information
Landslide warning information

【Nagasaki Prefectural River Erosion Control Information System】
<http://www.kasen-sabo.pref.nagasaki.jp/nagasaki/main/index.php>

【Ministry of Land, Infrastructure, Transport and Tourism River Disaster Prevention Information】
<https://www.river.go.jp/portal/#80>
for smart phones



Emergency and disaster contact details: ☎

Togitsu Town Hall 095-882-2211

Fire Station
Fire, Ambulance, Rescue 119

Police Station
Crime, crime prevention and road accidents 110

Disaster message board
NTT West <https://www.web171.jp>
NTT Docomo <http://dengon.docomo.ne.jp/top.cgi>
KDDI(au) <http://dengon.ezweb.ne.jp/>
Softbank/Ymobile <http://dengon.softbank.ne.jp/>

Things to remember when you can't get through on the phone:

In the event of a major disaster, general telephone and mobile phone calls will be restricted. Use NTT's Disaster Message Dial or your mobile phone's Disaster Message Board to contact your family and friends.

Disaster message dialing 171

Please follow the voice guidance.